

## Hole in the Wall Area and Outlaw Cave Directions and Information

The Hole in the Wall area is approximately 40 miles southwest of Kaycee. It was a place of refuge for outlaws after the Johnson County War in 1892. After this event locals who had been unfairly painted as rustlers and attacked by the big cattlemen were understandably ambivalent about people called outlaws by the other side. This made it a great place for rustlers to reside and escape the law. Outlaws, such as Butch Cassidy, the Sundance Kid, Harvey Logan (Kid Currie), and “Flatnose” George Currie, were known to frequent the area. Local “outlaws” included brothers Al and George Smith, among others.

The name “Hole in the Wall” probably came from Al Smith. Smith had a cow camp at the junction of Buffalo Creek and Spring Creek by which the stage road/mail route passed. When asked by the stage driver where he should put Smith’s mail Al Smith replied “Just stick it in a hole in the wall,” referring to the white bluff running alongside the stage road near the cabin. The name stuck and eventually evolved not just to include the cabin location, but the entire valley.

The Hole in the Wall valley, flanked by a red wall on one side and mountains on the other, made it was an easy area to contain livestock; while its remoteness, good water, grass, and friendly neighbors were ideal for outlaws retreating with stolen livestock.

In only recent years has one specific spot along the Red Wall been considered to be “the Hole in the Wall.” Previously it was known as the Red Gap or Outlaw Trail and is located where a small wildlife trail ascends to the top of the Red Wall on the East side of the valley. There is no large gap or hole as is commonly believed.

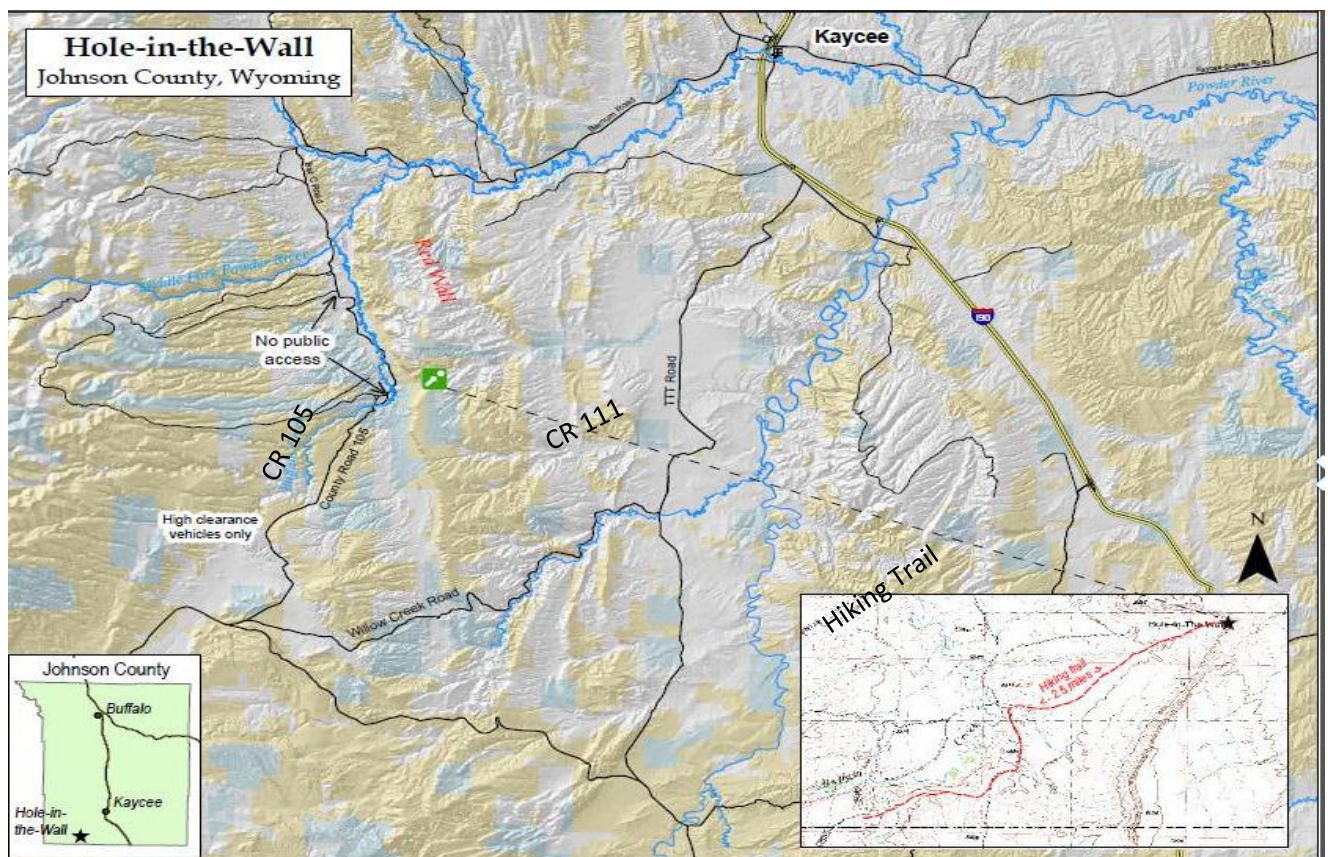
### Directions to the South End of the Hole in the Wall Valley, Hole in the Wall Fight Site, and “Hole in the Wall”/Outlaw Trail/Red Gap

#### To access the area:

- Take **Interstate 25 South** from Kaycee to the **TTT Road exit**.
- At TTT Road exit, drive south about 14 miles to **Willow Creek Road (County Road 111)**.
- Take this road west for about 18 miles to a primitive two-track road **County Road 105** which bears north.
- As you travel along **County Road 105** there are a number of livestock gates that must be opened and closed.
- Just near the parking area there is a monument surrounded by fence marking the site of the Hole in the Wall Fight in 1897.



**The access road terminates at the Hole in the Wall parking lot and trail head.** A hiking trail to the “Hole” is about 2.5 miles on uneven, brushy terrain. Hikers are reminded that the trail, located on public land is adjacent to private land, so hikers **must stay on the trail**. Once at the Red Wall hikers can also walk to the top of the Red Wall on the trail in the Red Gap.



## Directions to North End of Hole in the Wall Valley and Powder River Canyon/Outlaw Canyon

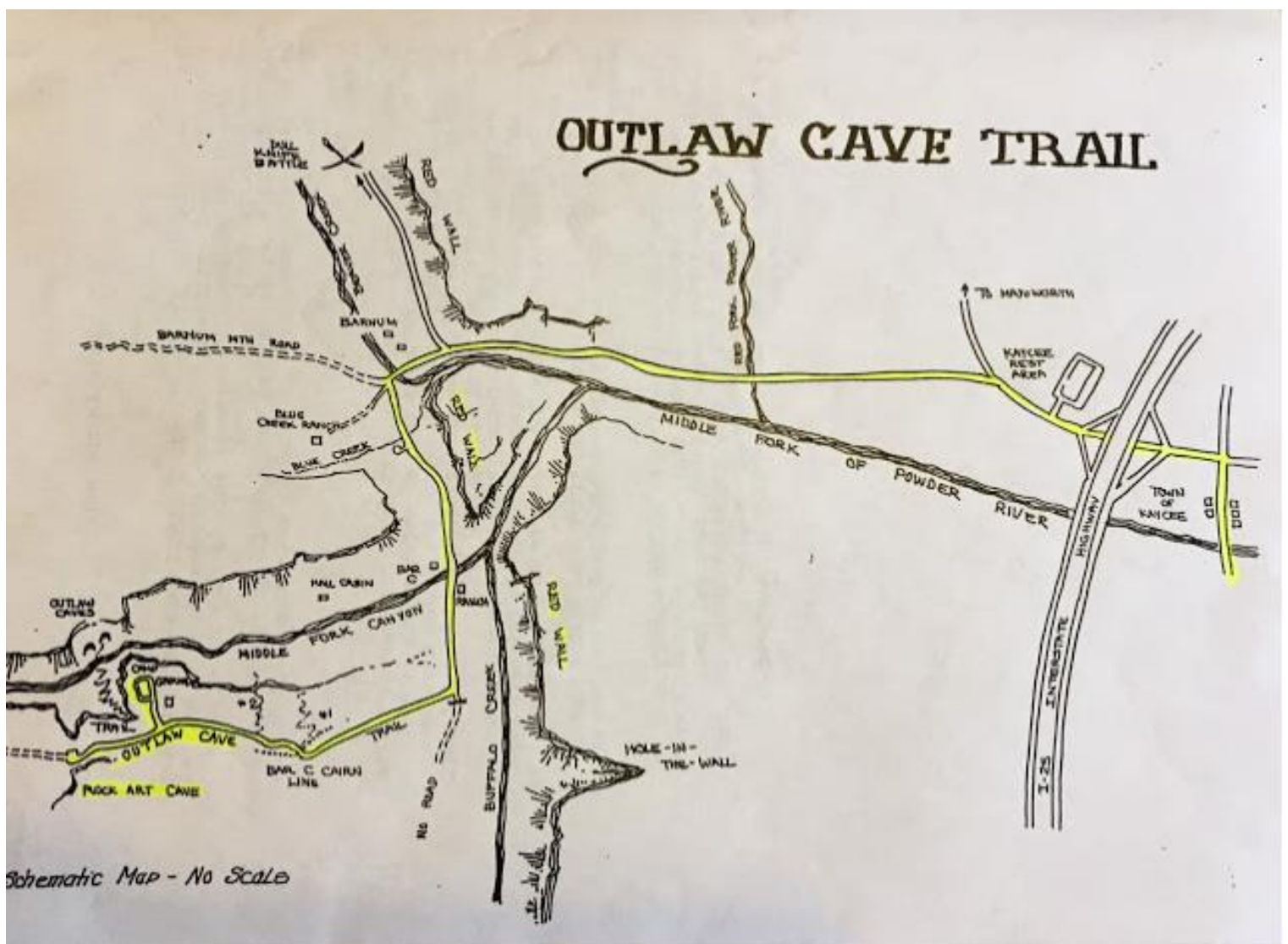
Powder River Canyon, also known as Outlaw Canyon, has public access, a campground, and fishing. The creek and **Outlaw Cave** is located at the bottom of a **steep** canyon, and it is recommended that only those accustomed to hiking should tackle the walk down and back.

**Outlaw Cave is just a small depression** in the side of the canyon where several outlaws lived around the turn of the 20<sup>th</sup> century. A wood frame and cow hides were used to seal off the cave from the weather, and it remained on the cave for many years along with some furniture left behind.

**This route is a shorter drive than the other option, and is very scenic. From here one can overlook the entire valley, including the Red Wall.**

To access the area:

- **Exit 254** for Kaycee.
- Head west on **Highway 191**(Mayoworth Rd.) for about 1 mile.
- Turn left onto **Highway 190 (Barnum Rd.)** for about 17.5 miles.
- Stay to the left on **Barnum Mt. Road** and continue about 500 yards.
- Turn left onto **Bar C Road**. This road is an all-weather access road and travels directly through the headquarters of the Hole-in-the-Wall ranch.
- The road will continue south then turn west past the boundary to the Middle Fork Management area, and then another 5 miles to the campground. The trail begins at the campground.



Hoofprints of the Past Museum has historical artifacts from the outlaw era on display and offers guided historical tours to this area. Please contact the museum at **307-738-2381** or online at [www.hoofprintsofthepast.org](http://www.hoofprintsofthepast.org) for more information.

